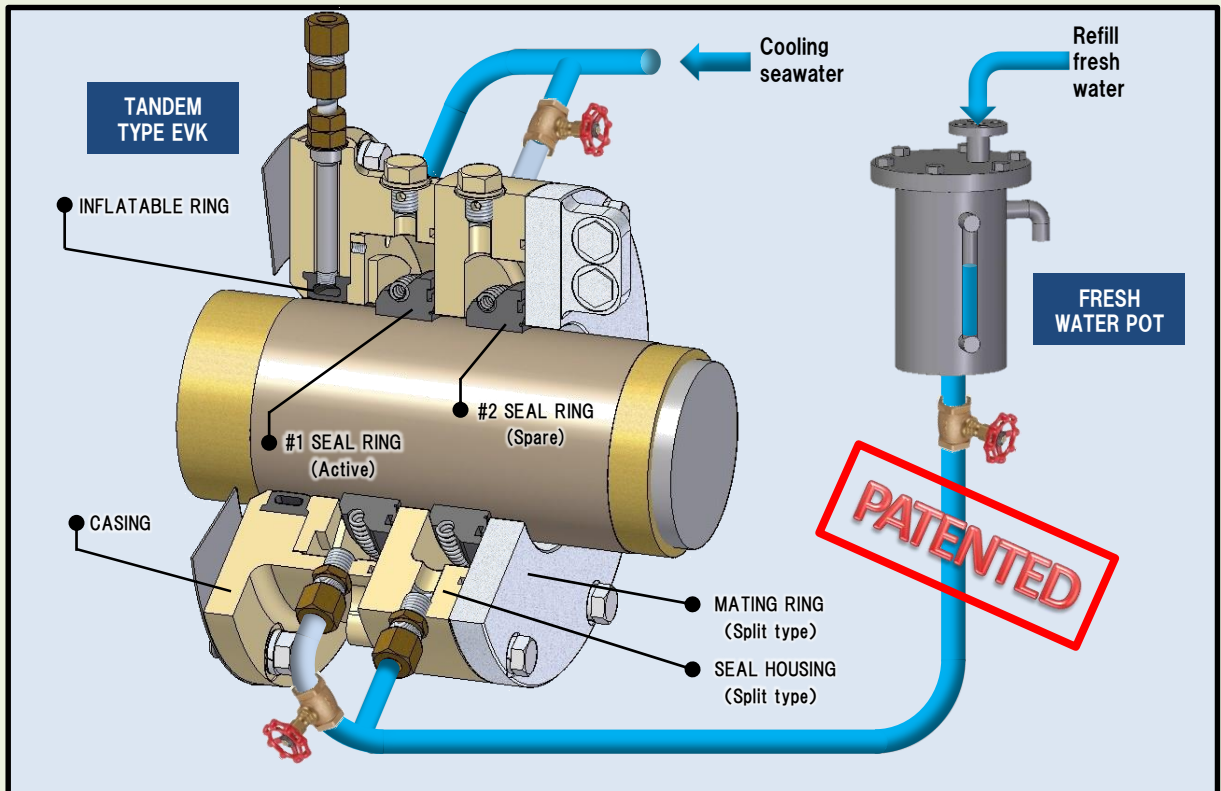


Spare ring is easily activated without disassembling.

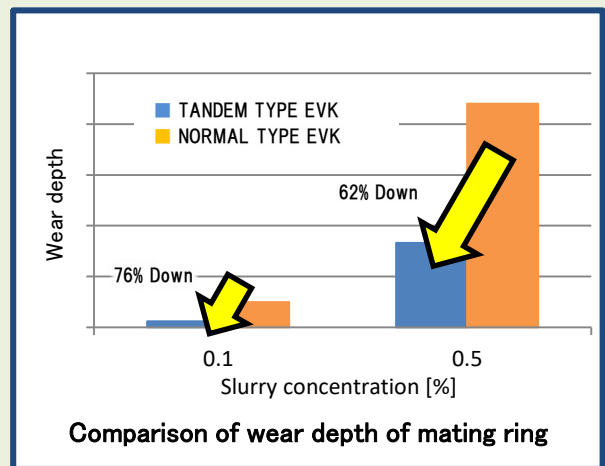


Features

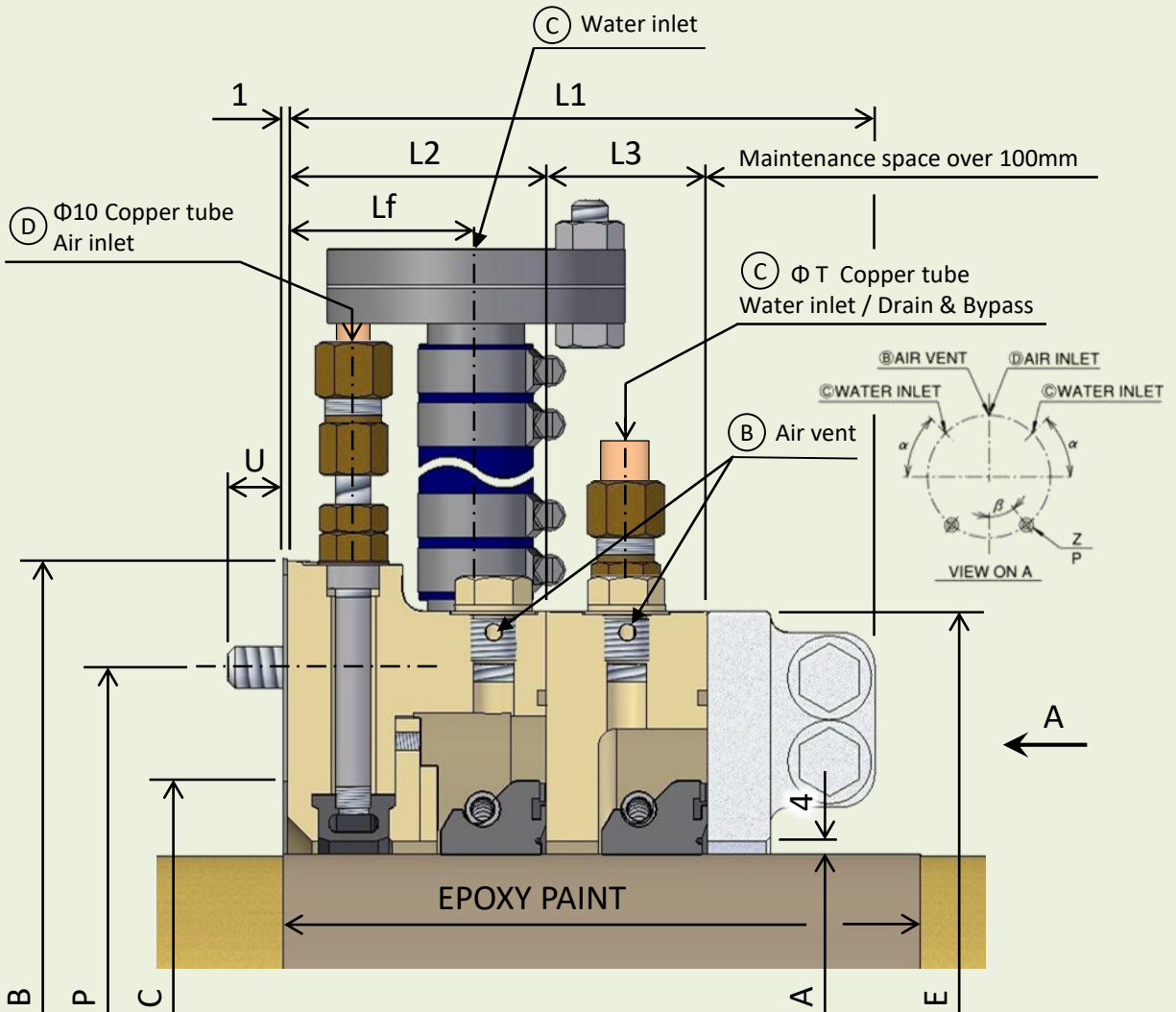
- **Improved wear resistance**
The active #1 seal ring is always lubricated by self-controlled clean fresh water. This results in the significant reduction in wear of the mating ring, the seal housing and the seal ring.
- **Built in spare seal ring**
The spare #2 seal ring is incorporated in the seal housing as a spare. The #2 seal stands by in an idle condition under normal operation and is cooled, lubricated & protected by fresh water.
- **Improved operability**
The active seal ring is easily changed from #1 to #2 spare seal by operation of valves . The #2 spare ring is activated without disassembling the seal unit should #1 seal ring shows increasing leakage.
- **Easy upgrade form existing EVK**
By replacing the seal housing, it may be possible to convert an existing EVK seal to a Tandem type.

Specification

- **Shaft diameter range**
 $\phi 101 \sim \phi 500$ (mm)
- **PV (Pressure-Velocity) Value**
Max. 0.6 (MPa·m/s)
(Water pressure in casing : Max. 0.15 MPa)



Standard Dimension



| Size | Sleeve dia. | | | | | | | | | | | | | | Mass (kg) |
|------|-------------|-----|-----|-----|-----|-----|-----|----|----|-----|----------|----|-----|-------|-----------|
| | A | B | P | C | E | L1 | L2 | L3 | Lf | T | Z | U | α | β | |
| 110 | 101 ~ 120 | 270 | 240 | 148 | 240 | 167 | 74 | 45 | 54 | φ12 | 6xM12x35 | 16 | 30° | 30° | 32 |
| 130 | 121 ~ 140 | 290 | 260 | 168 | 260 | 167 | 74 | 45 | 54 | φ12 | 6xM12x35 | 16 | 30° | 30° | 35 |
| 150 | 141 ~ 160 | 310 | 280 | 188 | 280 | 167 | 74 | 45 | 54 | φ12 | 8xM12x35 | 16 | 45° | 22.5° | 39 |
| 170 | 161 ~ 180 | 330 | 300 | 208 | 300 | 167 | 74 | 45 | 54 | φ12 | 8xM12x35 | 16 | 45° | 22.5° | 42 |
| 190 | 181 ~ 200 | 350 | 320 | 228 | 320 | 167 | 74 | 45 | 54 | φ12 | 8xM12x35 | 16 | 45° | 22.5° | 45 |
| 210 | 201 ~ 220 | 385 | 350 | 248 | 345 | 167 | 74 | 45 | 51 | φ15 | 6xM16x40 | 20 | 40° | 30° | 52 |
| 230 | 221 ~ 240 | 405 | 370 | 271 | 375 | 190 | 91 | 51 | 68 | φ15 | 6xM16x40 | 20 | 40° | 30° | 64 |
| 250 | 241 ~ 260 | 425 | 390 | 291 | 395 | 190 | 91 | 51 | 68 | φ15 | 6xM16x40 | 20 | 40° | 30° | 68 |
| 270 | 261 ~ 280 | 445 | 410 | 311 | 415 | 190 | 91 | 51 | 68 | φ15 | 8xM16x40 | 20 | 45° | 22.5° | 73 |
| 290 | 281 ~ 300 | 465 | 430 | 331 | 435 | 190 | 91 | 51 | 68 | φ15 | 8xM16x40 | 20 | 45° | 22.5° | 78 |
| 310 | 301 ~ 320 | 485 | 450 | 351 | 455 | 190 | 91 | 51 | 68 | φ15 | 8xM16x40 | 20 | 45° | 22.5° | 82 |
| 330 | 321 ~ 340 | 520 | 480 | 371 | 475 | 192 | 93 | 51 | 70 | φ15 | 8xM20x50 | 26 | 45° | 22.5° | 92 |
| 350 | 341 ~ 360 | 540 | 500 | 391 | 495 | 192 | 93 | 51 | 70 | φ15 | 8xM20x50 | 26 | 45° | 22.5° | 95 |
| 370 | 361 ~ 380 | 560 | 520 | 411 | 515 | 192 | 93 | 51 | 70 | φ15 | 8xM20x50 | 26 | 45° | 22.5° | 100 |
| 390 | 381 ~ 400 | 580 | 540 | 431 | 535 | 192 | 93 | 51 | 70 | φ15 | 8xM20x50 | 26 | 45° | 22.5° | 104 |
| 410 | 401~420 | 640 | 580 | 515 | 580 | 222 | 106 | 55 | 72 | φ15 | 8xM24x60 | 31 | 45° | 22.5° | 148 |
| 430 | 421~440 | 660 | 600 | 535 | 600 | 222 | 106 | 55 | 72 | φ15 | 8xM24x60 | 31 | 45° | 22.5° | 158 |
| 450 | 441~460 | 680 | 620 | 555 | 620 | 222 | 106 | 55 | 72 | φ15 | 8xM24x60 | 31 | 45° | 22.5° | 168 |
| 470 | 461~480 | 700 | 640 | 575 | 640 | 222 | 106 | 55 | 72 | φ15 | 8xM24x60 | 31 | 45° | 22.5° | 178 |
| 490 | 481~500 | 720 | 660 | 595 | 660 | 222 | 106 | 55 | 72 | φ15 | 8xM24x60 | 31 | 45° | 22.5° | 186 |

※ Refer to EVK2RV catalog for other dimensions.

※ Mating flange and connecting tube fitting attached to sealing device.

※ Longer bolts can be supplied upon request when the bearing flange id fixed between the stern tube and the EVK seal.